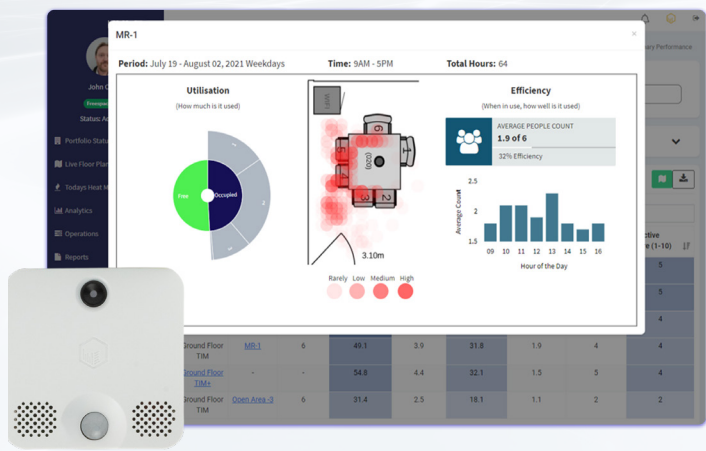


# Unlocking the right meeting room configuration.

The TIM sensor is non-optical and uses thermal imaging technology to capture meeting room/collaboration area occupancy and utilisation data. The sensor is non-intrusive, ceiling-mounted and has **95% accuracy**. This enables real-estate and workplace managers to reconfigure and right size their meeting room space, maximise meeting room availability and make a positive impact on reducing energy consumption.



## Benefits.

### Organisational benefits:

- Optimising meeting room design and usage
- Reduced energy and operational costs
- Compliance with organisational policies

### Employee benefits:

- Eliminating frustrations associated with booked and unused spaces
- Improved configurations based on employee needs
- Live booking status to improve employee productivity



### Optimisation & room configuration

The TIM data is updated in real-time in our analytics portal. This enables a granular insight into occupancy (i.e., number of people in the room at each point throughout the day, maximum and average occupancy) and utilisation (i.e., where people sit) so that rooms can be reconfigured based on actual usage (i.e., converting a 10-person room into two 5-person rooms). This improves space optimisation and increases the opportunity for employees to select the right room for their needs.



### Room booking & panel integration

Eliminate a key employee frustration where unoccupied meeting rooms are booked and show as unavailable. The TIM sensor detects occupancy which can be used to drive auto check-in, room release (if unoccupied for an agreed period of time) and trigger a new meeting through our proven meeting room booking system integration. This set-up can be configured around individual organisational policies and ensure a better and fairer meeting room utilisation. Additionally, TIM can seamlessly integrate with digital panels to provide a live status of a meeting room or collaboration space.



### Sustainability & reducing carbon footprint

The TIM sensor will detect occupancy in the meeting room, and this can be integrated to control the building management system. This enables organisations to reduce energy consumption and operational costs associated with heating and air conditioning systems. The sensor also has optional light and noise measurement capabilities that positively impact the creation of a healthy and safe workplace environment.